

## Your Legacy of Caring

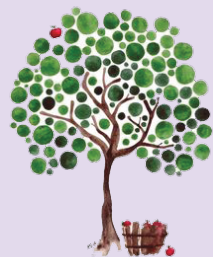
Have you considered naming the Dr. H. Bliss Murphy Cancer Care Foundation in your will?

It is a profound and lasting way to show your support of cancer care. After taking care of your loved ones, a bequest is a wonderful way to ensure that your commitment to cancer care will continue.

### Did you know:

- Gifts made in your will can reduce or eliminate final income tax that would otherwise reduce what you leave to your family.
- There is no immediate cost to putting a gift in your will. And if you so choose, you can leave your gift in memory or honour of someone special.
- Anyone can make a gift in their will – whatever the size. All gifts are greatly appreciated and will support cancer patients and treatment across Newfoundland and Labrador.
- These decisions can be made through discussions with your family, Financial Advisors, lawyer or insurance agent.

If you would like additional information, please call Lynette Hillier at 709-777-7590.



### Planned Giving

## SHARING SOME BIG CHANGES: RE-BRANDING FOR THE FOUNDATION

As a committed supporter, we wanted to share with you some big news! The Dr. H. Bliss Murphy Cancer Care Foundation has been the provincial charity supporting cancer care since the early 1970's. Before 2004, we were part of the Newfoundland Cancer Treatment and Research Foundation. With the creation of Eastern Health, we changed to the Dr. H. Bliss Murphy Cancer Care Foundation. The Dr. H. Bliss Murphy Cancer Centre in St. John's, where the Foundation office is located, was named after Newfoundland and Labrador's first radiation oncologist, Dr. H. Bliss Murphy.

For almost 20 years, that brand has served us very well. However, from the feedback of many of our donors and patients, we felt it was time for our brand to truly reflect the complete geographic area that we serve – Newfoundland and Labrador.

## DID YOU KNOW?

The Cancer Care Foundation uses donated Air Miles and Aeroplan miles to purchase plane tickets for patients who need to travel for their treatment.

If you would like to make a donation of Air Miles/Aeroplan miles for cancer patient travel, we would gladly accept them! Please give our office a call at (709) 777-7589 or email us at [info@can-cercarefoundation.ca](mailto:info@can-cercarefoundation.ca) and we will walk you through the process with you.



## HOW YOUR DONOR SUPPORT HELPS CANCER PATIENTS

These are just some of the ways your donations have helped cancer patients and their families this year:





*"To the wonderful caring donors to the Patient and Family Support Fund – I am one of the very thankful people that you have helped. I am so glad you are there and help so many others just like me!"*

*"Thank you so much for your support. Knowing you are there gave us peace to concentrate on improving quality of life. We appreciate the donors for your kind hearts. Your support will never go unnoticed."*

*"Thank you so much for the financial assistance. It is such a relief mentally to receive this assistance to alleviate the burden of costs associated with travel from Labrador to the island for the appointments."*



**968** cancer patients from NL have been assisted by \$326,801 from the Patient & Family Support Fund from April 1, 2019 to April 30, 2021.

			
<b>CASH</b> \$282,995	<b>FOOD</b> \$4,550	<b>GAS</b> \$800	<b>OTHER</b> \$3,967

# THANK YOU!

# COUNTING DOWN

## TO A NEW CHEMOTHERAPY UNIT

We are pleased to report on the progress of the new chemotherapy unit construction! What was a large open space is now treatment space, isolation rooms, office space, a quiet room and so much more! As we move along in the construction process, we are reminded of the generosity of donors to the In This Together campaign for a new Chemotherapy Unit for the Dr. H. Bliss Murphy Cancer Centre – they truly made this unit a reality!

Behind the scenes, numerous teams and committees are working on the transition plan to the new unit when it opens in 2022!



**IN THESE PHOTOS:** The new chemotherapy unit will have a fresh colour scheme, lots of natural light and comfortable furnishings and spaces for cancer patients and their family members.

## RADIATION DEPT

### RECEIVES NEW BLADDER SCANNER

Through our generous donors, we were able to purchase a bladder scanner for the Radiation Department.

Radiation to certain areas requires the patient to have a full bladder to reduce the potential side effects from radiation to surrounding organs. The bladder scanner allows the team to easily determine that the patient has the optimal amount of bladder fullness before the process begins to avoid excessive patient discomfort, and waiting. It will be very appreciated by the patients who will use it!

## THROUGH YOUR

### GENEROUS SUPPORT



Congratulations to Melissa O'Brien on being awarded the Dr. H. Bliss Murphy Cancer Care Foundation Scholarship from Memorial University's

Faculty of Medicine. Melissa is a recent graduate of MUN's Medical School with a passion for women's health, and a special interest in oncology. She is part of an ongoing retrospective chart review on metastatic HER2-positive breast cancer supervised by Cancer Care Program medical oncologist, Dr. Melanie Seal.

The Dr. H. Bliss Murphy Cancer Care Foundation Scholarship in Medicine is awarded each year to a Medical Student who demonstrates an interest in Oncology. She is so grateful to be the recipient of this year's award - Congratulations Melissa!

Through the generosity of our donors, additional scholarships have also been established in the Faculty of Nursing and the Faculty of Pharmacy for those with a demonstrated interest in the field of oncology within their respective fields.



**I WAS BORN AND RAISED** in Newfoundland, and I am a proud Newfoundlander living in Ontario. Like so many, I had to leave home to progress in my career. I started donating to numerous organizations over the years - trying to share the little I can.

Cancer is a horrible illness and it touches the lives of so many. Over the last couple of years many members of my family have been going through cancer. I spent a couple of months attending treatments and meeting the doctors/nurses and support staff of the Dr. H. Bliss Murphy Cancer Center with my mom. I also read an article on the Foundation's Facebook page that 1 in 2 Newfoundlanders will be diagnosed with cancer in their lifetime. Those are some very scary numbers.

It is my hope that my small donation added to everyone else's donations might help someone have a happy outcome. As the saying goes "no matter where I roam, Newfoundland will always be my home"

- Crystal Ellsworth, Courtice, ON



SUPPORTING CANCER CARE...RIGHT HERE

RETURNING  
**OCT 2021**

[www.hopelotto.ca](http://www.hopelotto.ca)